

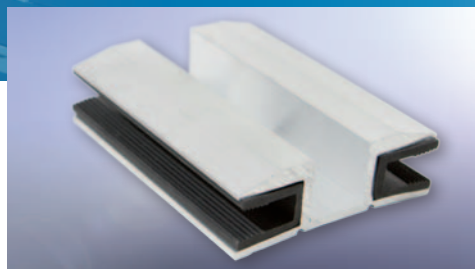


Systematic Solutions

AERODYNAMIC EAST-WEST FLAT ROOF MOUNTING SYSTEM

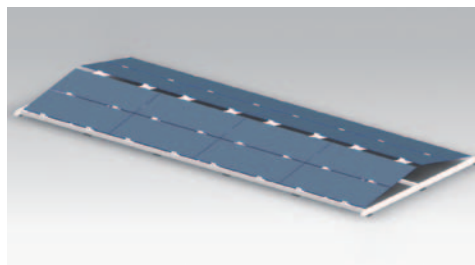
EFFECTUS

FOR THIN-FILM MODULES

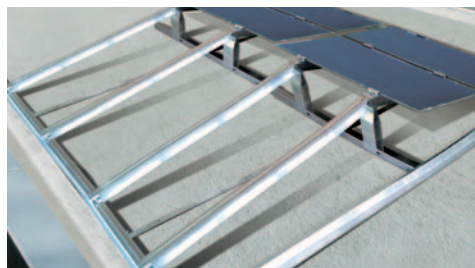


EFFECTUS is a mounting system for installing frameless thin-film modules on flat roofs.

The east-west orientation guarantees optimal use of your roof surface. Compared with conventional systems you can install up to 30% more power on your roof. The aerodynamic design allows your thin-layer modules to be installed without extra ballast and without roof penetration.

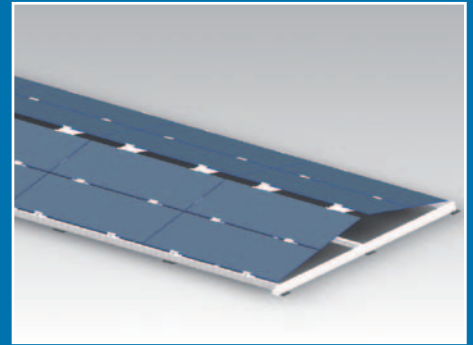
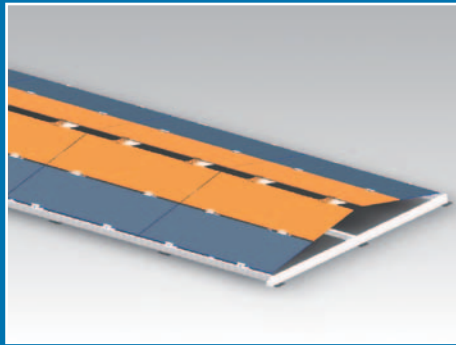
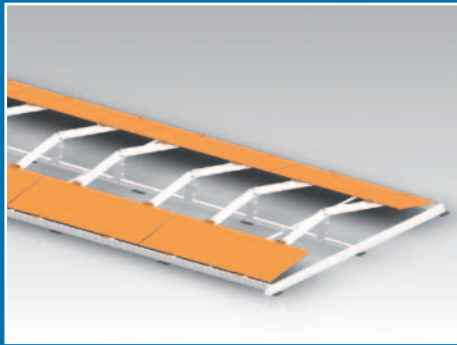
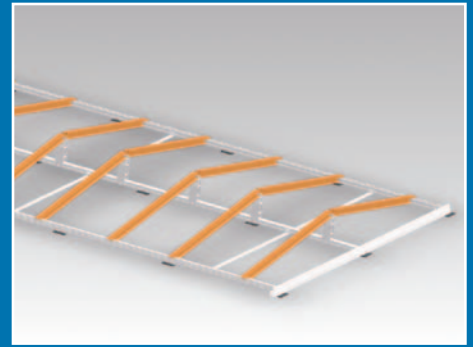
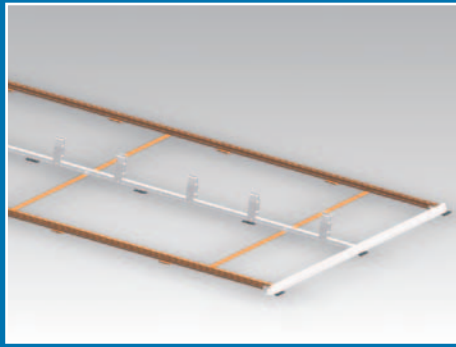
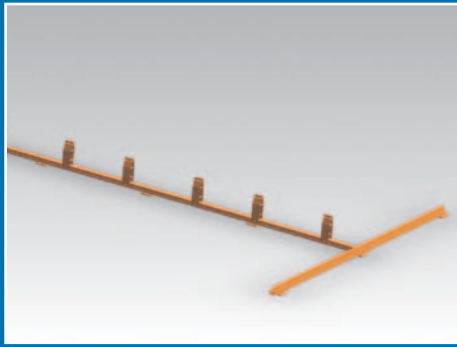


High-quality aluminium and stainless steel components make the certificated system completely weatherproof. Effectus can be installed quickly and easily with just one tool thanks to the use of a small number of ingenious system components.



EFFECTUS - more power on your flat roof.

THE BEST SOLUTION FOR FLAT ROOFS WITHOUT ROOF PENETRATION!



Mounting **EFFECTUS**

Your big advantage:

- + No roof penetration
- + Approx. 30% more power on your roof
- + No additional applied load
- + Low design height
- + Optimal water drainage
- + Tested for aerodynamics and statics
- + Building protection mat with plasticiser barrier included
- + Integrated cable channel
- + Quick and easy installation with just one tool
- + Project-specific design
- + Corrosion resistant
- + Constant availability

Specifications:

- Installed angle: 10 °
- Alignment: east – west
- Applied load incl. module: 16 kg/m²
- Building protection mat with plasticiser barrier (films approved upon request)
- Ideal for use with 1200 x 600 mm thin-film modules
- Building heights of up to 25 m
- Terrain categories 2, 3 and 4
- Minimum system size 50 kWp
- Edge distances: 90 cm with Attika; 140 cm without Attika
- Dimensions (W x L x H): 3,000 x 4,870 x 288 mm
- 40 cm maintenance passage on all 4 modules
- Max. permissible roof pitch 4°
- To wind load zone 4
- To snow load zone 3
- DIN 1055-4 and DIN 1055-5 tested